

	AVM302B	AVM303A	AVN305A	AVM311	AVM365B	AVM359C
						
Image Sensor	1/3" SONY CMOS			1/4" SONY CMOS	1/3" SONY CMOS	
Lens Type	Fixed					Vari-Focal
Lens	f3.8mm / F1.5	f3.8mm / F1.5 f2.8mm / F1.8		f3.8mm / F1.5		f2.8 ~ f12mm / F1.4 ~ F2.8
Day & Night	-	Y	Y	-	Y	Y
IR LED	-	1 unit (15m)	14units (20m)	-	56 units (25m)	2 units (35m)
Min. Lux	0.1 Lux	0.1 Lux (IR off) 0 Lux (IR on)	0.1 Lux (IR off) 0 Lux (IR on)	1 Lux	0.1 Lux (IR off) 0 Lux (IR on)	1 Lux (IR off) 0 Lux (IR on)
Max. Resolution	1280x1024 (1.3MP / 30FPS)	1280x1024 (1.3MP / 30FPS)	1280x1024 (1.3MP / 30FPS)	1280x1024 (1.3MP / 30FPS)	1280x1024 (1.3MP / 30FPS)	1280x1024 (1.3MP / 30FPS)
Compression Type	H264 / MPEG4 / MJPEG	H264 / M PEG4 / MJPEG	H264 / MPEG4 / MJPEG	H264 / MPEG4 / MJPEG	H264 / MPEG4 / MJPEG	H264 / MPEG4 / MJPEG
Multi-Stream	3 Streams	3 Streams	3 Streams	3 Streams	3 Streams	3 Streams
Power in	PoE DC12V	PoE DC12V	PoE DC12V	PoE DC12V	PoE DC12V	PoE DC12V
Audio in / out	1 in (built-in)	2 in (built-in, line-in) 1 out (line-out)	-	-	-	-
Alarm in / out	1 in 1 out	1 in 1 out	-	1 in 1 out	1 in 1 out	1 in 1 out
MicroSD Card Slot	Y	Y	-	Y	-	Y
IP Rating	-	-	IP66	-	IP67	IP66
Vandal Proof	-	-	-	IK08	-	-
Temperature	0° ~ 40°C	0° ~ 40°C	-25° ~ 50°C	0° ~ 40°C	-25° ~ 50°C	-25° ~ 50°C
WDR	-	-	-	-	-	-
Other	-	Motorized pan	-	-	-	Heater (Optional)

2MP IP Camera



2MP D-WDR IP Camera Series



	AVM400B	AVM401	AVM402	AVM411	AVM420U	AVM420U-NWIR	AVM403J
Image Sensor	1/2.9" SONY CMOS						
Lens Type	CS-Mount	Fixed					Vari-Focal
Lens	-	f3.8mm / F1.5 f2.8mm / F1.8 (Optional)	f3.8mm / F1.5	f3.8mm / F1.5 f2.8mm / F1.8 (Optional)	f2.8mm / F1.8	f3.8mm / F1.5	f2.8 ~ f12mm / F1.4 ~ F2.8
Day & Night	Y	-	Y	-	Y	Y	Y
IR LED	-	-	New IR 1 unit (15m)	-	14 units (20m)	New IR 2 units (30m)	Solid Light 2 units (35m)
Min. Lux	1 Lux / F1.5	1 Lux	0.1 Lux (IR off) 0 Lux (IR on)	1 Lux	0.1 Lux (IR off) 0 Lux (IR on)	0.1 Lux (IR off) 0 Lux (IR on)	0.1 Lux (IR off) 0 Lux (IR on)
Max. Resolution	1920x1080 (2MP / 30FPS)						
Compression Type	H.264 / MPEG4 / MJPEG	H264 / MJPEG		H264 / MPEG4 / MJPEG	H264 / MPEG4 / MJPEG	H264 / MPEG4 / MJPEG	H264 / MJPEG
Multi-Stream	4 Streams	4 Streams	4 Streams	4 Streams	4 Streams	4 Streams	4 Streams
Power in	PoE DC12V	PoE DC12V	PoE DC12V	PoE DC12V	PoE DC12V	PoE DC12V	PoE DC12V
Audio in / out	2 in (built-in, line-in) 1 out (line-out)	-	1 in (line-in) 1 out (line-out)	-	-	-	-
Alarm in / out	1 in 1 out	1 in 1 out	1 in 1 out	1 in 1 out	1 in 1 out	-	1 in 1 out
MicroSD Card Slot	Y	Y	Y	Y	-	-	Y
IP Rating	-	-	-	-	IP66	IP66	IP66
Vandal Proof	-	IK08	-	IK08	-	-	-
Temperature	0° ~ 40°C	0° ~ 40°C	0° ~ 40°C	0° ~ 40°C	-25° ~ 50°C	-25° ~ 50°C	-25° ~ 50°C
WDR	-	DWDR	DWDR	-	-	-	DWDR
Other	-	Crystal Image	Crystal Image 3-Axis PIR	-	-	-	Crystal Image

AVM2200T	AVM2220T	AVM2421	AVM2451T	AVM2432T	AVM2452T	AVM2453
1/2.7" CMOS			1/2.9" SONY CMOS			
Fixed				Vari-Focal		
f3.8mm / F1.5		f3.8mm / F1.5 f2.8mm / F1.8 (Optional)		f2.8 ~ 12mm / F1.4 ~ F2.8		
Y	Y	Y	Y	Y	Y	Y
12 units (10m)	12 units (10m)	New IR 1 Unit (10m)	36 Units (20m)	24 units (25m)	36 units (30m)	Solid Light 2 units (35m)
0.1 Lux (IR off) 0 Lux (IR on)	0.1 Lux (IR off) 0 Lux (IR on)	0.1 Lux (IR off) 0 Lux (IR on)	0.1 Lux (IR off) 0 Lux (IR on)	0.1 Lux (IR off) 0 Lux (IR on)	0.1 Lux (IR off) 0 Lux (IR on)	0.1 Lux (IR off) 0 Lux (IR on)
1920x1080 (2MP / 30FPS)						
H264 / MJPEG	H264 / MJPEG	H264 / MJPEG	H264 / MJPEG	H264 / MJPEG	H264 / MJPEG	H264 / MJPEG
2 Streams	2 Streams	4 Streams	4 Streams	4 Streams	4 Streams	4 Streams
PoE DC12V	PoE DC12V	PoE DC12V	PoE DC12V	PoE DC12V	PoE DC12V	PoE DC12V
-	-	2 in (built-in, line-in) 1 out (line-out)	1 in (line-in) 1 out (line-out)	1 in (line-in) 1 out (line-out)	1 in (line-in) 1 out (line-out)	1 in (line-in) 1 out (line-out)
1 in 1 out	1 in 1 out	1 in 1 out	1 in 1 out	1 in 1 out	1 in 1 out	1 in 1 out
-	-	Y	-	-	Y	Y
IP66	IP66	-	IP67	IP66	IP66	IP66
-	-	-	-	-	-	-
-25° ~ 50°C	-25° ~ 50°C	0° ~ 40°C	-25° ~ 50°C	-25° ~ 50°C	-25° ~ 50°C	-25° ~ 50°C
DWDR	DWDR	DWDR	DWDR	DWDR	DWDR	DWDR
-	-	3-Axis PIR	-	-	-	-









	AVM500A	AVM503	AVM511	AVM521B	AVM532F	AVM542F / FH	AVM552J	AVM543	AVM553J	AVM561E / J	AVM565AH	AVM565J	AVM571F	AVM583G / GH	AVZ592 / 593		
Image Sensor	1/2.8" SONY CMOS																
Lens Type	CS-Mount	Fixed			Vari-Focal			Vari-Focal (Motorized)				10X PTZ	20X PTZ	20X PTZ	30X PTZ		
Lens	-	f3.8mm / F1.5	f3.8mm / F1.5 f2.8mm / F1.8 (Optional)	f3.8mm / F1.5	f2.8 ~ f12mm / F1.4 ~ F2.8			f5.0 ~ f50mm / F2.0 ~ F2.8			f4.7 ~ f94mm / F1.6 ~ F3.5			f4.5 ~ f135mm / F1.6 ~ F4.4			
Day & Night	Y	Y	-	Y	Y	Y	Y	Y	Y	Y	Y	Y	-	-	Y		
IR LED	-	1 unit (15m)	-	1 unit (15m)	2 units (30m)	3 units (50m)	2 units (35m)	3 units (50m)	2 units (35m)	3 units (60m)	3 units (60m)	3 units (60m)	-	-	Solid Light 8 units (200m)		
Min. Lux	1 Lux / F1.5	0.1 Lux (IR off) 0 Lux (IR on)	1 Lux	0.1 Lux (IR off) 0 Lux (IR on)	1 Lux (IR off) 0 Lux (IR on)	0.1 Lux (IR off) 0 Lux (IR on)	0.1 Lux (IR off) 0 Lux (IR on)	0.1 Lux (IR off) 0 Lux (IR on)	0.1 Lux (IR off) 0 Lux (IR on)	0.1 Lux (IR off) 0 Lux (IR on)	0.1 Lux (IR off) 0 Lux (IR on)	0.1 Lux (IR off) 0 Lux (IR on)	0.1 Lux	0.1 Lux	0.1 Lux (IR off) 0 Lux (IR on)		
Max. Resolution	1920x1080 (2MP / 30FPS)	1920x1080 (2MP / 30FPS)	1920x1080 (2MP / 30FPS)	1920x1080 (2MP / 30FPS)	1920x1080 (2MP / 30FPS)	1920x1080 (2MP / 30FPS)	1920x1080 (2MP / 30FPS)	1920x1080 (2MP / 30FPS)	1920x1080 (2MP / 30FPS)	1920x1080 (2MP / 30FPS)	1920x1080 (2MP / 30FPS)	1920x1080 (2MP / 30FPS)	1920x1080 (2MP / 30FPS)	1920x1080 (2MP / 30FPS)	1920x1080 (2MP / 30FPS)		
Compression Type	H264 / MJPEG	H264 / MJPEG	H264 / MJPEG	H264 / MJPEG	H264 / MJPEG	H264 / MJPEG	H264 / MJPEG	H264 / MJPEG	H264 / MJPEG	H264 / MJPEG	H264 / MJPEG	H264 / MJPEG	H264 / MJPEG	H264 / MJPEG	H264 / MJPEG		
Multi-Stream	4 Streams	4 Streams	4 Streams	4 Streams	4 Streams	4 Streams	4 Streams	4 Streams	4 Streams	4 Streams	4 Streams	4 Streams	4 Streams	4 Streams	4 Streams		
Power in	PoE DC12V	PoE DC12V	PoE DC12V	PoE DC12V	PoE DC12V	PoE DC12V	PoE DC12V	PoE DC12V	PoE DC12V	PoE DC12V	PoE DC12V	PoE DC12V	PoE DC12V	PoE DC12V	PoE DC12V	PoE DC19V / AC24V	DC19V / AC24V
Audio in / out	2 in (built-in, line-in) 1 out (line-out)	1 in (line-in) 1 out (line-out)	-	2 in (built-in, line-in) 1 out (line-out)	1 in (line-in) 1 out (line-out)	1 in (line-in) 1 out (line-out)	1 in (line-in) 1 out (line-out)	1 in (line-in) 1 out (line-out)	1 in (line-in) 1 out (line-out)	1 in (line-in) 1 out (line-out)	1 in (line-in) 1 out (line-out) (AVM561J only)	-	1 in (line-in) 1 out (line-out)	1 in (line-in) 1 out (line-out)	1 in (line-in) 1 out (line-out)	1 in (line-in) 1 out (line-out)	
Alarm in / out	2 in 2 out	1 in 1 out	1 in 1 out	1 in 1 out	1 in 1 out	1 in 1 out	1 in 1 out	1 in 1 out	1 in 1 out	1 in 1 out	1 in 1 out	1 in 1 out	1 in 1 out	1 in 1 out	1 in 1 out	1 in 1 out	
MicroSD Card Slot	Y	Y	Y	Y	Y	Y	Y	Y	Y	Y (AVM561J only)	-	-	-	Y	Y		
IP Rating	-	-	-	-	IP66	IP66	IP66	IP66	IP66	IP66	IP67	IP67	IP67	IP67	IP66	IP66	
Vandal Proof	-	-	IK08	-	IK08	IK10	-	IK10	-	-	-	-	-	-	-	-	
Temperature	0° ~ 40°C	0° ~ 40°C	0° ~ 40°C	0° ~ 40°C	-25° ~ 50°C	-25° ~ 50°C / -40° ~ 50°C	-25° ~ 50°C	-25° ~ 50°C	-25° ~ 50°C	-25° ~ 50°C	-25° ~ 50°C	-25° ~ 50°C / -40° ~ 50°C	-25° ~ 50°C	-25° ~ 50°C	-25° ~ 50°C	-25° ~ 50°C	
WDR	Y (120dB)	Y (120dB)	Y (120dB)	Y (120dB)	Y (120dB)	Y (120dB)	Y (120dB)	Y (120dB)	Y (120dB)	Y (120dB)	DWDR	DWDR	Y (120dB)	Y (120dB)	Y (120dB)		
Other	RS485	Motorized pan	-	3-Axis	-	3-Axis H = Heater Version	Heater (Optional)	3-Axis	Heater (Optional)	Auto Focus Heater (Optional)	Crystal Image Auto Focus H = Heater Version	Crystal Image Auto Focus	Auto Focus Joystick Control	Auto Focus Joystick Control H = Heater Version	Auto Focus Joystick Control Heater (Optional) RS485 AHD / TVI / IP / Tribrid		

	AVM3650L	*AVM3421	AVM3452T	AVM3432T	*AVM3443	*AVM3453	*AVM3445	*AVM3455	*AVM3465	*AVM3492
Max. Resolution	2048 x 1536 (3MP / 30FPS)									
Image Sensor	1/3" CMOS		1/2.8" SONY CMOS							
Lens Type	Fixed		Vari-Focal				Vari-Focal (Motorized)			20X PTZ
Lens	f3.6mm / F1.8	f2.8mm / F1.5	f2.8 ~ 12mm / F1.4 ~ F2.8	f2.8 ~ 12mm / F1.4 ~ F2.8	f2.8 ~ 12mm / F1.4 ~ F2.8	f2.8 ~ 12mm / F1.4 ~ F2.8	f2.8 ~ 12mm / F1.4 ~ F2.8	f2.8 ~ 12mm / F1.4 ~ F2.8	f2.8 ~ 12mm / F1.4 ~ F2.8	f4.7 ~ f94mm / F1.6 ~ F3.5
Day & Night	Y	Y	Y	Y	Y	Y	Y	Y	Y	Y
IR LED	36 units (30m)	New IR 1 unit (15m)	36 units (30m)	24 units (20m)	Solid Light 3 units (50m)	Solid Light 2 units (35m)	Solid Light 3 units (50m)	Solid Light 2 units (35m)	Solid Light 3 units (60m)	New IR 8 units (200m)
Min. Lux	0.1 Lux (IR off) 0 Lux (IR on)	0.1 Lux (IR off) 0 Lux (IR on)	0.1 Lux (IR off) 0 Lux (IR on)	0.1 Lux (IR off) 0 Lux (IR on)	0.1 Lux (IR off) 0 Lux (IR on)	0.1 Lux (IR off) 0 Lux (IR on)	0.1 Lux (IR off) 0 Lux (IR on)	0.1 Lux (IR off) 0 Lux (IR on)	0.1 Lux (IR off) 0 Lux (IR on)	0.1 Lux (IR off) 0 Lux (IR on)
Compression Type	H264 / MJPEG	H264 / MJPEG	H264 / MJPEG	H264 / MJPEG	H264 / MJPEG	H264 / MJPEG	H264 / MJPEG	H264 / MJPEG	H264 / MJPEG	H264 / MJPEG
Multi-Stream	4 Streams	4 Streams	4 Streams	4 Streams	4 Streams	4 Streams	4 Streams	4 Streams	4 Streams	4 Streams
Power in	PoE DC 12V	PoE DC 12V	PoE DC 12V	PoE DC 12V	PoE DC 12V	PoE DC 12V	PoE DC 12V	PoE DC 12V	PoE DC 12V	DC 19V / AC24V
Audio in / out	1 in (line-in) 1 out (line-out)	1 in (line-in) 1 out (line-out)	1 in (line-in) 1 out (line-out)	1 in (line-in) 1 out (line-out)	1 in (line-in) 1 out (line-out)	1 in (line-in) 1 out (line-out)	1 in (line-in) 1 out (line-out)	1 in (line-in) 1 out (line-out)	1 in (line-in) 1 out (line-out)	1 in (line-in) 1 out (line-out)
Alarm in / out	1 in 1 out	1 in 1 out	1 in 1 out	1 in 1 out	1 in 1 out	1 in 1 out	1 in 1 out	1 in 1 out	1 in 1 out	1 in 1 out
MicroSD Card Slot	Y	Y	Y	-	Y	Y	Y	Y	Y	Y
IP Rating	IP66	-	IP66	IP66	IP66	IP66	IP66	IP66	IP67	IP66
Vandal Proof	-	-	-	-	IK10	-	IK10	-	-	-
Temperature	-25° ~ 50°C	0° ~ 40°C	-25°C ~ 50°C	-20°C ~ 40°C	-25° ~ 50°C	-25° ~ 50°C	-25° ~ 50°C	-25° ~ 50°C	-25° ~ 50°C	-25° ~ 50°C
WDR	DWDR	DWDR	DWDR	DWDR	DWDR	DWDR	DWDR	DWDR	DWDR	DWDR
Other	-	PIR 3-Axis	-	-	3-Axis	-	3-Axis	-	Auto Focus	Auto Focus Joystick Control RS485

* Made by order. The lead time is long. Please contact your sales representative to discuss more details.

4~16CH NVR **MARS**

4~64CH NVR **POLLO**

	AVH304EA	AVH0401B	AVH800EA6	AVH308EB	AVH408P	AVH315	AVH316	AVH317
								
Channel Number	4CH		6CH	8CH		16CH		
Video Output	HDMI					HDMI & VGA		
PoE built-in	PoE x 4	PoN x 4	-	PoN x 8	PoE x 8	-	-	-
Audio out	Y (HDMI)	Y (HDMI)	Y	Y (HDMI)	Y (HDMI)	Y (HDMI)	Y (HDMI)	Y (HDMI)
HDD Storage*	SATA built-in x 1	SATA built-in x 1	SATA built-in x 1	SATA built-in x 2	SATA built-in x 2	SATA built-in x 2	SATA built-in x 2	SATA built-in x 2
eSATA	Y	Y	Y	Y	Y	Y	Y	Y
Max. Record Performance	1920 x 1080 @ 120 IPS	1920 x 1080 @ 120 IPS	1280 x 720 @ 180 IPS 1920 x 1080 @ 120 IPS	1280 x 720 @ 240 IPS 1920 x 1080 @ 120 IPS	1280 x 720 @ 240 IPS 1920 x 1080 @ 120 IPS	1280 x 720 @ 240 IPS	1280 x 720 @ 240 IPS 1920 x 1080 @ 120 IPS	1280 x 720 @ 240 IPS 1920 x 1080 @ 120 IPS
Throughput	48Mbps	48Mbps	48Mbps	48Mbps	48Mbps	48Mbps	48Mbps	48Mbps
Compatibility	AVTECH ONVIF 2.2	AVTECH ONVIF 2.2	AVTECH ONVIF 2.2	AVTECH ONVIF 2.2	AVTECH ONVIF 2.2	AVTECH ONVIF 2.2	AVTECH ONVIF 2.2	AVTECH ONVIF 2.2
Recording Type	Manual Record Event Record Schedule Record	Manual Record Event Record Schedule Record	Manual Record Event Record Schedule Record	Manual Record Event Record Schedule Record	Manual Record Event Record Schedule Record	Manual Record Event Record Schedule Record	Manual Record Event Record Schedule Record	Manual Record Event Record Schedule Record
Power in	DC 48V 12.6W (without HDD and PoE connected)	DC 48V 7.68W (without HDD and PoE connected)	DC 12V 9.6W (without HDD)	DC 48V 12.6W (without HDD and PoE connected)	DC 48V 12.6W (without HDD and PoE connected)	DC 12V 9.6W (without HDD)	DC 12V 9.6W (without HDD)	DC 12V 9.6W (without HDD)
Dimension	345mm (L) x 225mm (W) x 68.3mm(H)	345mm (L) x 225mm (W) x 68.3mm(H)	197mm (L) x 197mm (W) x 36mm (H)	375mm (L) x 264.8mm (W) x 68mm (H)	375mm (L) x 264.8mm (W) x 68mm (H)	375mm (L) x 264mm (W) x 68mm (H)	375mm (L) x 264mm (W) x 68mm (H)	375mm (L) x 264mm (W) x 68mm (H)
Temperature	10° ~ 40°C	10° ~ 40°C	10° ~ 40°C	10° ~ 40°C	10° ~ 40°C	10° ~ 40°C	10° ~ 40°C	10° ~ 40°C
Other	Push Video Push Status	Push Status	Support CMS Push Video Push Status	Push Video Push Status	Support CMS Push Video Push Status	Push Status	Support CMS Push Video Push Status	Support CMS Push Video Push Status

	AVH504P	AVH516B	AVH516A+	AVH364	**AVH564
					
	4CH	16CH		64CH	
	HDMI				
PoE built-in	PoE x 4	-	-	-	-
Audio out	Y (HDMI)	Y	Y	Y (HDMI)	Y (HDMI)
HDD Storage*	SATA built-in x 2	SATA built-in x 3	SATA built-in x 10	SATA built-in x 10	SATA built-in x 45
eSATA	Y	Y	Y	Y	-
Max. Record Performance	1920 x 1080 @ 120 IPS	1920 x 1080 @ 480 IPS 1280 x 720 @ 480 IPS	1920 x 1080 @ 480 IPS 1280 x 720 @ 480 IPS	1920 x 1080 @ 480 IPS 1280 x 720 @ 960 IPS	1920 x 1080 @ 1920 IPS 1280 x 720 @ 1920 IPS
Throughput	48Mbps	120Mbps	120Mbps	192Mbps	480Mbps
Compatibility	AVTECH ONVIF 2.2	AVTECH ONVIF 2.2	AVTECH ONVIF 2.2	AVTECH ONVIF 2.2	AVTECH ONVIF 2.2
Recording Type	Manual Record Event Record Schedule Record	Manual Record Event Record Schedule Record	Manual Record Event Record Schedule Record	Manual Record Event Record Schedule Record	Manual Record Event Record Schedule Record
Power in	DC 48V 12.6W (without HDD and PoE connected)	DC 19V 17.5W (without HDD)	DC 19.5V x 2 28.5W x2 (Dual Power)	DC 19V 55.1W (without HDD)	AC 110V x 2 850W x 2 (Dual Power)
Dimension	345mm (L) x 225mm (W) x 68.3mm(H)	326mm (L) x 432mm (W) x 90mm (H)	325mm (L) x 281mm (W) x 138mm (H)	325mm (L) x 281mm (W) x 138mm (H)	830mm (L) x 446mm (W) x 175mm (H)
Temperature	10° ~ 40°C	10° ~ 40°C	10° ~ 40°C	10° ~ 40°C	10° ~ 40°C
Other	Support CMS Push Video Push Status	Support CMS Push Video Push Status	Support CMS Disk Array Built in (RAID5) Power Redundancy Seamless Record Smart Search Push Status	Support CMS Push Video Push Status	Support CMS Disk Array Built in (RAID5) Power Redundancy Seamless Record Smart Search

* The capacity of one SATA HDD is up to 4TB. ** Made by order. The lead time is long. Please contact your sales representative to discuss more details.

Zoom Lens with AF

Equipped with a motorized zoom lens, this camera series eliminates the need to adjust focal length and focus manually on site. Installers could adjust camera focus and focal length remotely from the recorder or the mobile app, EagleEyes.



Superb 3MP / 5MP IP Solution

To get superb image resolution and quality, the newly-launched 3MP / 5MP IP solution has all you can expect. It supports H.264 and MPEG4 compression formats, and delivers 30fps@3MP / 15fps@5MP resolution for live display and recording.

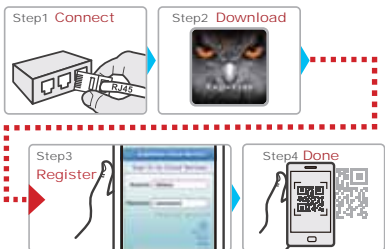
AVTECH 3MP / 5MP IP cameras are capable of local recording to save a few event footages, but they might be overwritten soon because of the small storage capacity. To save more 3MP / 5MP security footages for later use, you can connect the cameras to AVTECH 3MP / 5MP NVR.



Cloud EaZy Networking

Plug & Play

EaZy Networking is developed for AVTECH products (NVR / DVR / IP cameras) to simplify network configurations by just a few steps.



Buddy

You can easily share your EaZy Networking account and classify your Buddy to many levels to access your cloud device separately.

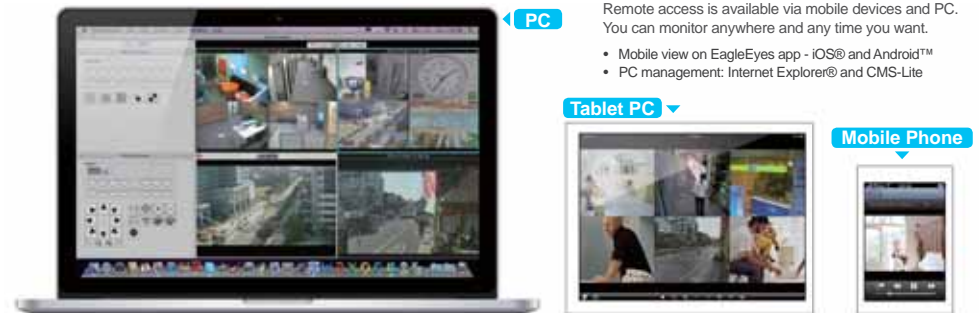


Push Video - Real-time Event Notification

Every time PUSH VIDEO solution detects an event, our NVR will immediately send an event notification to your mobile device within five seconds, and meanwhile, EagleEyes, the mobile surveillance app will be activated automatically for remote video playback.

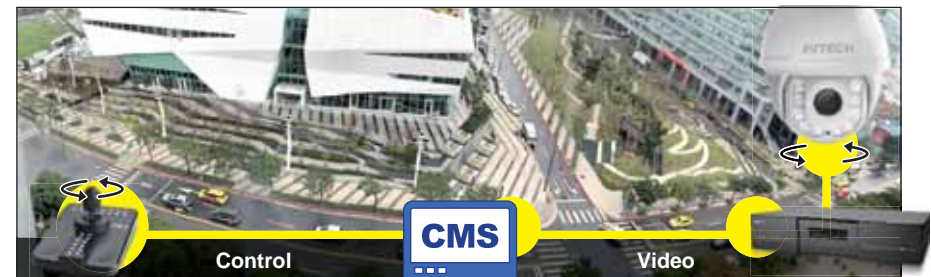


Multi-Platform Support



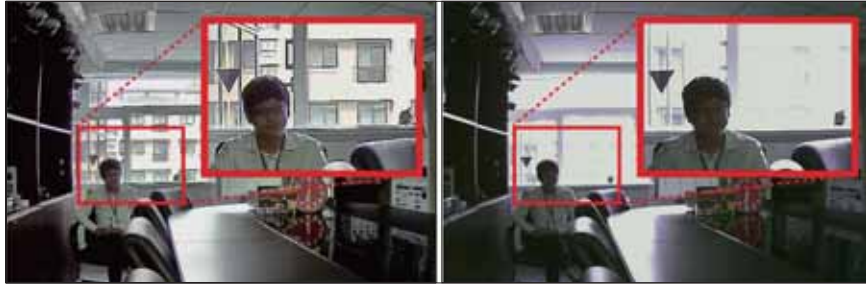
Easy PTZ Control with CMS

To remotely control AVTECH IP speed dome camera, you can connect a USB joystick to the PC with our CMS program (Lite / Standard / Pro) installed to move the camera. No NVR is needed to send the control commands. In addition to CMS, you can also make PTZ control via our mobile app, EagleEyes.



WDR (Wide Dynamic Range)

With WDR, the AVTECH IP solution is especially suitable for overexposure and dark areas to increase image recognizability. It's always easy to tell who and what's there.



With WDR

Without WDR

Multiple Channels Recording up to 64CH

For multiple channels monitoring and recording, AVH564 and AVH364 are designed as a 64CH NVR to use. In addition to the huge storage capacity to save video data, they can also connect to an external disk array to get more storage capacity and build a RAID5 system for data safety if necessary.

64CH TV WALL



64CH Recorder



Accessories

	HDM02	AVX931B	AVX912R/T	AVX916R/T	AVX912R6	AVX913R6	AVX102	AVX919 Coming Soon	AVX992	AVX993	AVX997
Product Name	HDMI Matrix	Video Server	EoC converter (Ethernet over Coaxial)	HoC converter (HDMI over coaxial)	PoC converter (PoC x 6, Giga port x 2)	PoN converter (PoN x 6, Giga port x 2)	Joystick	Standalone CMS	10-bay Disk Array (eSATA)	10-bay Disk Array (mini SAS / Used for AVH364 only)	10-bay Disk Array with RAID5 mechanism (eSATA)
Power in	DC 12V	DC 12V	DC 12V (for each)	DC 5V (for each)	DC 48V	DC 48V	-	DC 19V	DC 19V	DC 19V	DC 19V
Description	Users could combine the displays of up to 4 HDMI devices (including NVR and DVR) into one monitor and control all four devices with one mouse, providing the most economic way to have a 64CH surveillance solution as an alternative to use a PC-based CMS software.	This video server could turn a traditional analog camera into a network camera. It also supports local video recording when a microSD card (up to 64GB) is inserted to this device. Push Video supported to get alarm events immediately on iOS and Android devices. MicroSD card support (up to 64GB) for video storage.	This converter is used to easily upgrade your CCTV camera to a megapixel IP camera with existing coaxial cabling. This converter allows signals to transmit over coaxial cables up to 400m(5C2V)@22Mbps.	This converter is used to extend the Full HD transmission distance up to 70 meters with a RG-6 coaxial cable. Also, the control signals from the USB mouse / keyboard, and IR remote control are able to be transferred.	This PoC (power-over-coaxial) converter supports power/data to max. 6 PoC IP cameras through coaxial cables, and the distance between each camera to this device can be up to 200 meters with power supplied or 300 meters without power supplied.	This PoN (power-over-network) converter supports 48V DC power supply to IP cameras through network cables, and the distance between an IP camera and this device could reach up to 100 meters.	This joystick is used with AVTECH CMS "Trident" to make basic control of PTZ cameras.	Different from PC-based CMS, This standalone CMS is designed to eliminate the need of software installing on PC. You don't need to worry about the compability issue, and also the setup is easy.	This 10-bay disk array is designed for DVR and NVR to save video data.	This 10-bay disk array is designed especially to use with AVH364 for video storage. It uses mini SAS for data transmission.	This 10-bay disk array is designed for DVR and NVR to save video data. It also supports RAID5 system building to secure data safety.



Client-server Mode

Client-server mode available to manage larger system with multiple computers. *(Pro version only)*

Multiple monitor display

Supports up to 8-monitor display and able to define purposes of each monitor.

Large Camera Management No

Manages up to 65535 cameras.

Speed Dome Joystick Control

96CH Live Monitor

Supports each monitor up to 96CH live display. *(Pro version only)*

e-Map Live Monitor

Supports multi-layered maps with camera location on it for intuitive management.

Event Pop-out Monitor

When an event occurs, the event monitor pops up the channel immediately with live display. Up to 4CH event pop-ups are supported. To see event playback with pre-alarm recording, click on the pop-up again.

Health Check Monitor

Shows the status of your PC, such as CPU usage, RAM usage, network upload/download speed, in the control panel for loading check.

Smart Search

Smart Search allows users to search motion events in a selected area of a camera image. *(Pro version only)*

Video Playback

1CH video playback to check what happened.

	Lite	STD	PRO
Video CH & device management ability	64CH	64CH	1000+ CH
Client-server Mode	NA		Yes
Multiple monitor display output	Single	4	8
Live View & Control			
Total Live Display CH Number	24	64	96
Video Record			
Total Record CH Number	16 (up to 5MP)	24 (up to 5MP)	
E-Map			
E-Map	NA	Yes	
Event Notification	NA	Yes	
Event Management			
Event Pop-up	NA	1CH	4CH
Health Check			
Push Status	E-Mail		
Push Video	Yes (By AVTECH NVR / DVR)		
Health Monitoring	NA	Yes	
Plug-in module support			
LPR Plug-in	NA	Yes	
POS Plug-in	NA	Yes	
Thermal Video Plug-in	NA	Yes	
IVA Lossing Object Plug-in	NA	Yes	
IVA Left Object Plug-in	NA	Yes	
IVA Virtual Fence Plug-in	NA	Yes	
IVA Face Detection Plug-in	NA	Yes	
Others			
Price	Free	Free during beta promotion	
Activation	By E-mail		
ODM	YES (Charged by discussion)		

